

# DINNAGES TRANSPORT PUBLISHING

Post your form, or enquiries with SAE, to Dinnages, Unit 11, Hove, BN3 5RA

Transport & Local, Photos and Postcards  
A Unique library of photographs from original material

Stockist of current bus and railway booklets from:  
Maidstone & District and East Kent Bus Club  
The Omnibus Society, PHRS Book series  
Peter A Harding, Branch Line Railway Series  
Buggleskelly Railway books  
Always a selection of used & obsolete transport books

Historic & Contemporary Transport Films on DVD  
Postal Sales from our Photo Library Newsletter

Check out our Online store or auction sales.  
Postal Sales welcome, or find us at an event.  
An established family concern trading in our 22nd year!

The Dinnages Library has been created from original negatives and slides from a variety of photographers such as;  
T Iving, P Lawrence, J Turley, I Richardson, E Charman, B Boddy, B Lodge, P Gavin, J Roberts, H. Frier, M Cheesman, Jarrett/Banks, D Monk, G Gangloff, J Jones, N Friswell, M Cripps, L Lane, G Kramer-Johnson, M West, F Gurr, D Taylor, B Hutson, L Hough, B Holland, M & J Piggott, RH Simpson, G Arnold+others, UK Trams, Trolleybuses, Buses, Railway, Volk's & local scenes too

Check out our sister club site  
[www.Sussex-Transport.co.uk](http://www.Sussex-Transport.co.uk)  
For transport & related clubs and societies

8

# DINNAGES TRANSPORT PUBLISHING

Established 1989, now in our 22nd trading year!

## NEWSLETTER

July 2010

A terrific response to our last Newsletter, helped immensely by the Brighton & Hove 75th event, coupled with the much desired proposed release of the 1970's views on offer taken by Ernest (Ernie) Charman, see page 7 for this months views.



Our regular feature of the 28 Black & White historical views, 14 again from Barrie Hutson, all pre-1969 vintage 11 x BH&D 3 x Brighton Corporation, the others from a mix from our own collection of negatives, all relating to various depots, garages or bus stations.

Views we have of the Derek Monk collection as stated last month, were bought originally by auction in 1991 not being sold to Dennis Clark who as everyone knows, holds the negatives of Eric Surfleet.



15th Edition

Continued...

Amount of photos and renumbering the EC Series caused a delay in posting this month, so this issue end date is extended to the 10th August.

The 'Looking Back' view within the Argus, mistakenly used a previous image although the correct view can now be seen at the Argus online. Since 2001 four presentations have been given at three different Sussex Club evenings using the wealth of material from all three, from trams, buses to steam railway. As more finds its way into print more of these unique views can be shared and enjoyed by others.

Our thanks must go to both Matt & James at the lab over many years of care, initially with negatives latterly digitised images in order to give the best finishes where possible. Every 35 roll film we used, has now been digitised for later use, however much too younger material for Newsletter such as those days of Haven Bus.



### 9x6 Prints ready to frame

The best of our library images Mounted 9x6 on A4 black card  
Subscribers only £3.50 from stock, otherwise retailing at £3.95  
Special requests allow for end of month print date to supply.  
These fit exactly into ready made A4 certificate glass frames.

2

Name :-	Leave Blank	By end of Month
Address:-	Qty	@ 50p
	1	£0.50
	2	£1.00
	3	£1.50
	4	£2.00
	5	£2.50
	6	£3.00
	7	£3.50
	8	£4.00
	9	£4.50
	10	£5.00
	11	£5.50
	12	£6.00
	13	£6.50
	14	£7.00
	15	£7.50
	16	£8.00
	17	£8.50
	18	£9.00
	19	£9.50
	20	£10.00
	21	£10.50
	22	£11.00
	23	£11.50
	24	£12.00
	25	£12.50
	26	£13.00
	27	£13.50
	28	£14.00
Colour Prints #:	@50p	
CREDIT — Overpayment/returns/buying (See last months sales receipt if appropriate)	CR	-
Fee towards Postage Average 66p/96p (Use form or copy, not for online use)	1st C	+75p
My payment by Cheque is enclosed / sent via BACS	Total	£

Please make cheques payable to 'G Dinnages' sorry anything else will be returned. Funds to clear before posting. (No card payments)  
Payments can also be made by through your bank using BACS (Telephone/Online) just make your transfer to 09525-1108852  
Our photos are not sold on approval, however future credit held on any returns. Postal damages must be notified within 7 days for any replacements. Purchasing any view from our library is a licence for YOUR personal use only, and does not permit any public display or other commercial use by yourself or through others (e.g. books, magazines, web sites), which will require prior consent, details on application. The complete terms of sale & with regard to © copyright can be viewed at [www.TransportPostcards.co.uk/copyright.html](http://www.TransportPostcards.co.uk/copyright.html)  
Please photocopy this order form if required. Only one final view of each image will be supplied. Duplicates will be credited.

Please sign and date your order here:

7

## Colour views by Ernie Charman



Another batch of images from Ernie Charman on offer, no less than FIVE Lodekka views as these are one of the most requested vehicles from his collection. No dates have been provided for these other than the Seventies. The later view in 1977 is a nice bright view in Portslade showing the all over advert Rediffusion.

PLEASE NOTE: The order numbering for the EC Series will NOT now use the original numbering system as listed last month, with those views now using EC0001 - EC0009. This month works onward being 10-16.

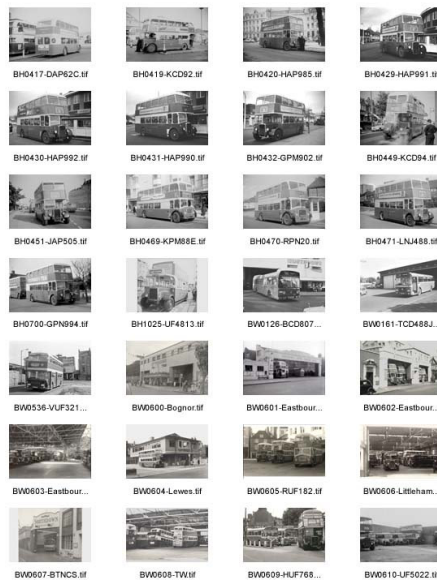
As always, should subscribers wish to return any view considered not to their satisfaction, a credit would be provided for future Newsletter print orders following the questionable prints safe return. We would much prefer this than those considered unacceptable being sold on.



6

## This Months 28 B&W Selections

BW references are from the B&W Dinnages mixed photographer library. BH references relate to the Barrie Hutson collection. See the back page



BW0607-BTNC5.IF BW0608-TW.IF BW0609-HJF768... BW0610-UF5022.IF

3

Reorder	Dated	Registration	Fleet No	New	Chassis	FirstOperator	Route	Notes
BH0417		n/aDAP62C	62	1965	Bristol FS6B	BH&D	19	Brighton Station rear view
BH0419		n/aKCD92	92	1949	AEC Regent III 0912E	BCT	42	Brighton Station clockwise route 42
BH0420		n/aHAP985	447	1953	Bristol KSW6G	BH&D	44A	Seven Dials/Vernon Terrace Snow on grass 1966?
BH0429		00-00-66HAP991	453	1954	Bristol KSW6G	BH&D	5B	Hangelton opposite Granadier Hotel
BH0430		00-00-66HAP992	454	1954	Bristol KSW6G	BH&D	5B	Hangelton opposite Granadier Hotel
BH0431		00-00-66HAP990	452	1953	Bristol KSW6G	BH&D	5B	Hangelton opposite Granadier Hotel
BH0432		00-00-66GPM902	442	1952	Bristol KSW6G	BH&D	8	Hangelton Avenue Shops by Granadier Hotel
BH0449		14-Jun-66KCD94	94	1949	AEC Regent III 0912E	BCT	46A	At Fiveways/Preston Drive with boiling Radiator
BH0451		00-6-66JAP505	467	1954	Bristol KSW6G	BH&D	45	Relief duty at Old Steine South with MCD 532? To rear
BH0469		00-4-67KPM88E	88	1967	Bristol Lodekka FLF6G	BH&D	2	Rottingdean on East side with shops
BH0470		00-4-67RPN20	20	1960	Bristol FS6B	BH&D	1A	Whitehawk Avenue/Lintott Avenue
BH0471		00-4-67LNJ488	488	1956	Bristol KSW6G	BH&D	3A	Whitehawk Avenue/Twineham Road
BH0700		00-00-67GPN994	446	1953	Bristol KSW6G	BH&D	5B	Patcham Ladies Mile Road
BH1025		00-07-71UF4813	0813	1929	Leyland Titan TD1. Leyland National	Southdown	100	Veteran bus service, photo by DONALD HUTSON
BW0126		00/00/73 BCD 807L	7	1973	115/1R/0102	Southdown	50A	Route 50A Elmer at Bognor Bus Station
BW0161		00/00/77 TCD 488J	488	1970	Bristol RESL6L	Southdown	254	Route 254 Funtington at Chichester garage
BW0536		00/00/74 VUF321K	2121	1971	Daimler CRL6L	Southdown	11	Conway Street red/cream 11 Damage to front end Bognor Bus Station frontage
BW0600		Bognor						Eastbourne Royal Parade - 3 vehicle rear ends within Eastbourne Pevensey Road JCD28 FUF234 & 2 GUF Eastbourne Cavendish Coach Station Interior 18+ vehicles in view
BW0601		Eastbourne						Lewes Bus Station
BW0602		Eastbourne						
BW0603		Eastbourne						
BW0604		Maybourne	GCD354	254	1939 Leyland Titan TD5	Southdown	25	Lewes Bus Station
BW0605		02-May-65	RUF182	182	1956 Leyland Titan PD2/12	Southdown	38	Pool Valley with 2880CD on 31 & MUF45? On route 10
BW0606			CCD33	1423	1935 Leyland Tiger TS7	Southdown	71	Littlehampton garage with other vehicles
BW0607			SCD30N	1430	1974 Ford URC-R1114	Southdown	64	Brighton Coach Station Manchester/Steine Street
BW0608		05-Feb-68	404DCD	404	1964 Leyland Titan PD3/4 Leyland Leopard	Southdown	depot	Parked off duty in Tunbridge Wells garage alongside M&D buses Tunbridge Wells Green Line Coach Station EUF140D JXC499 on 704
BW0609		05-Jul-70	HUF768E	168	1967 PSU3/1R	Southdown	219	
BW0610			UF5022	722	1929 Tilling-Stevens B10B2	Southdown	depot	JN961 UF5021 UF4509 UF5022 1936-1950
EC0010		1970's	SPM21	2021	1960 Bristol FS6B Leyland Leopard	BH&D	5	Hangelton passing West in Church Road Hove
EC0011		1970's	NUF453G	453	1969 PSU3/1RT	Southdown	35	At Pool Valley for Westdene with L National on 109 to Lancing
EC0012		1970's	XPMA4	2044	1962 Bristol FS6G	BH&D	13	Pulling out of Pool Valley
EC0013		1970's	FFM73C	2073	1965 Bristol FLF6C	BH&D	230	Worthing Pier termini South side Later NBC logo
EC0014		1977	NCD550M	550	1973 Bristol VRTSL2/6LX	Southdown	26	Hollingbury at South Street Portslade All over advert
EC0015		1970's	GPN78D	2076	1966 Bristol Lodekka FLF6G	BH&D	2A	For Shoreham yet passing M&S and Meakers
EC0016		1970's	DPM65C	2065	1965 Bristol Lodekka FS6G	BH&D	1A	For Whitehawk empty at termini?

4

5